

P. R. A. DIV. NO.	STATE	FED. AID PROJ. NO.	SHEET NO.	TOTAL SHEETS
1	MAINE	UGI-01-1(4)	1	7

# STATE OF MAINE STATE HIGHWAY COMMISSION

## PLAN AND PROFILE STATE HIGHWAY "C" PORTLAND

CUMBERLAND COUNTY  
FEDERAL AID PROJECT NO. U.G.I.-01-1(4)

TOTAL LENGTH .037 MILES  
PLAN 1 IN. = 30 FT.  
PROFILE { HOR. 1 IN. = 50 FT.  
VER. 1 IN. = 5 FT.  
CROSS SECTIONS 1 IN. = 5 FT.

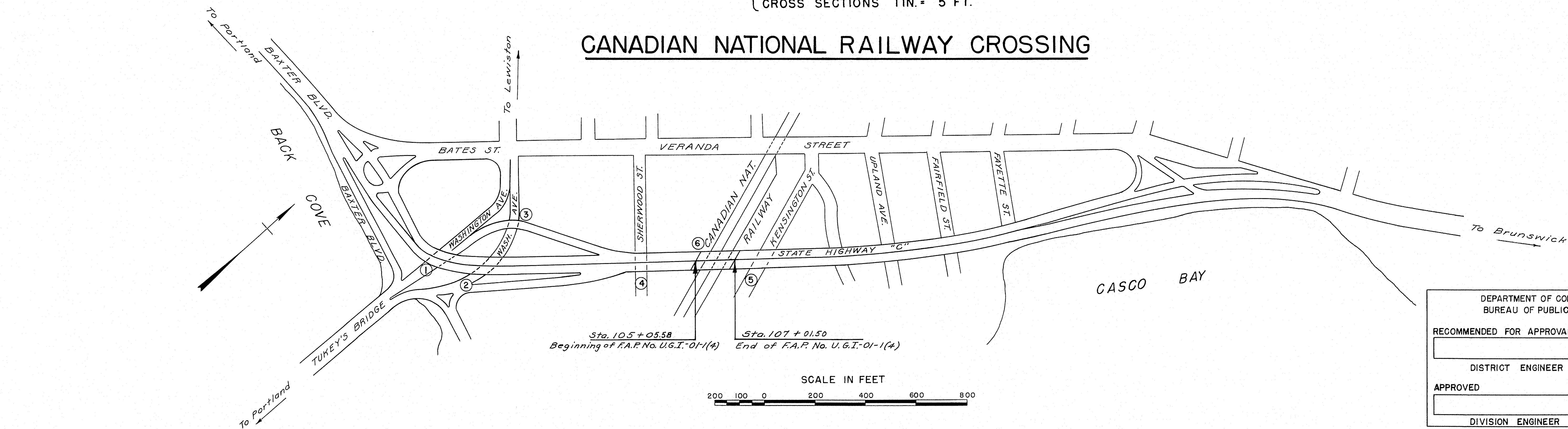
### INDEX OF SHEETS

SHEET NO.	TITLE
1	TITLE PAGE
2	PLAN, PROFILE, BORINGS & QUANTITIES
3	ABUTMENT & PIER PLAN & DETAILS
4	PIER DETAILS
5	FRAMING PLAN & SECTION
6	FRAMING PLAN DETAILS
7	RAILING & MISC. DETAILS

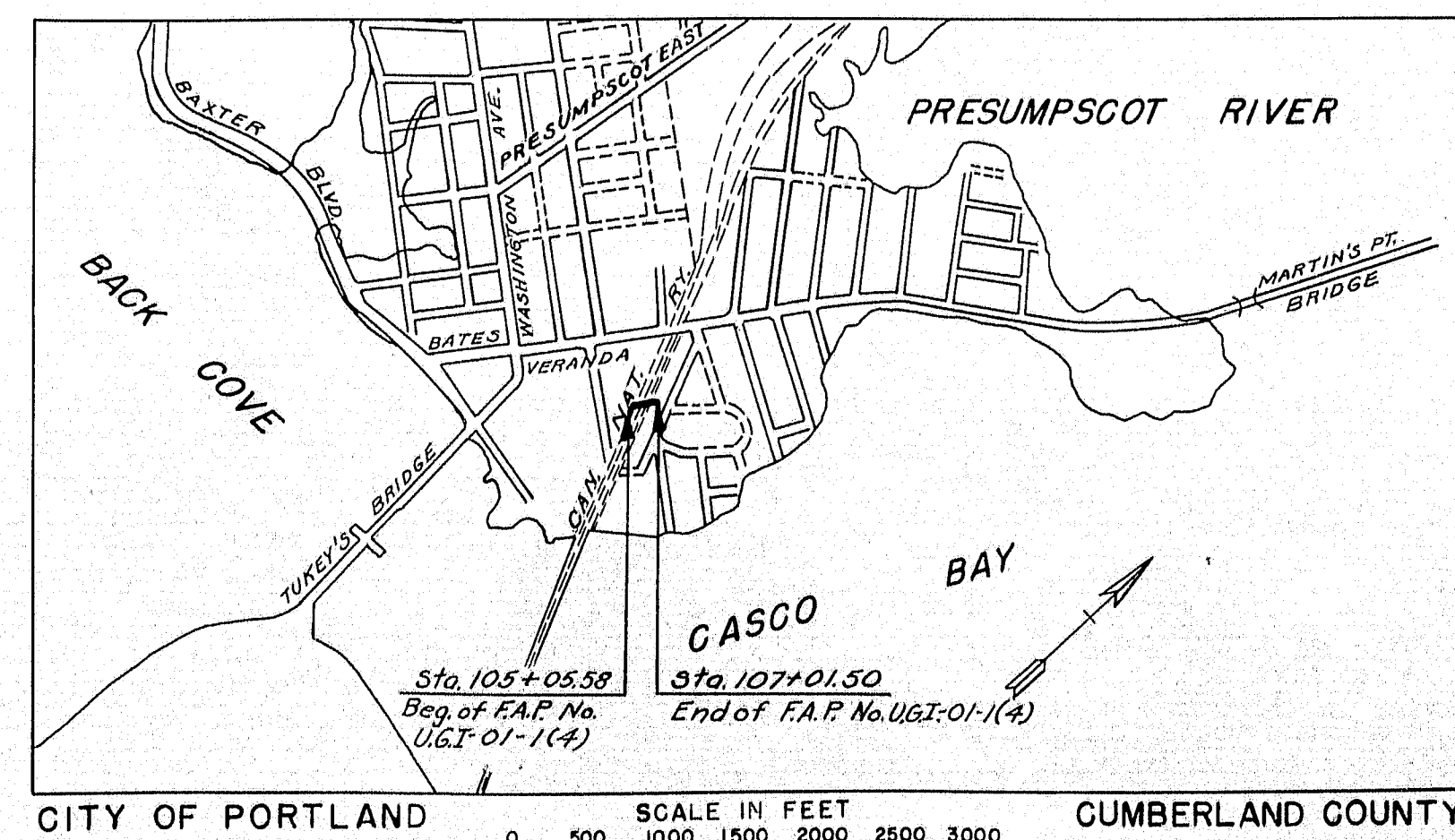
### CONVENTIONAL SIGNS

STATE OR NATIONAL LINE	-----	SURVEY LINE	-----
COUNTY LINE	-----	CULVERT	-----
TOWN LINE	-----	DROP INLET	-----
UNFENCED PROPERTY	-----	TROLLEY POLE	-----
FENCE	-----	POWER POLE	-----
RIGHT OF WAY LINE	-----	TEL. POLE	-----
TRAVELED WAY	-----	MARSH	-----
RAILROAD	-----	TREES	-----
RETAINING WALL	-----	STONE WALL	-----
LIMITED ACCESS	-----		

### CANADIAN NATIONAL RAILWAY CROSSING



SCALE IN FEET  
200 100 0 200 400 600 800



ALL WORK CONTEMPLATED UNDER THIS CONTRACT  
TO BE GOVERNED BY AND IN CONFORMITY WITH THE  
SPECIFICATIONS APPROVED MAY 24, 1945, EXCEPT AS  
MODIFIED ON THESE PLANS.

APPROVED:  
MAINE STATE HIGHWAY COMMISSION

*Harley A. Welch*  
CHIEF ENGINEER  
*Harold B. Emery*  
CHIEF ENGINEER

DEPARTMENT OF COMMERCE  
BUREAU OF PUBLIC ROADS

RECOMMENDED FOR APPROVAL

DISTRICT ENGINEER DATE

APPROVED

DIVISION ENGINEER DATE

THOMAS WORCESTER INC.  
CONSULTING ENG.  
84 STATE ST. BOSTON, MASS.

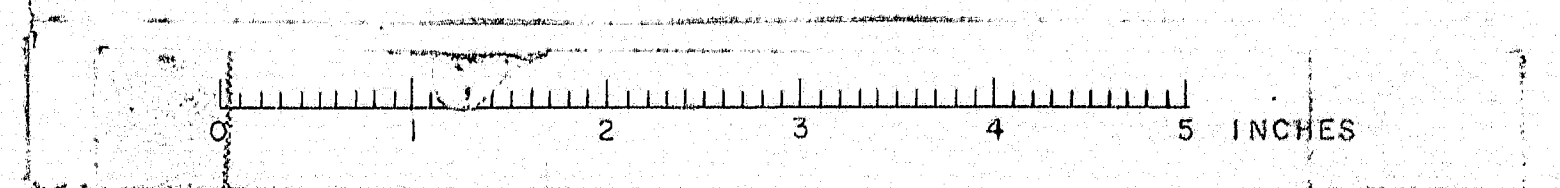
RECOMMENDED FOR APPROVAL DATE

DISTRICT ENGINEER  
BUREAU OF PUBLIC ROADS ADMINISTRATION  
DEPT. OF COMMERCE

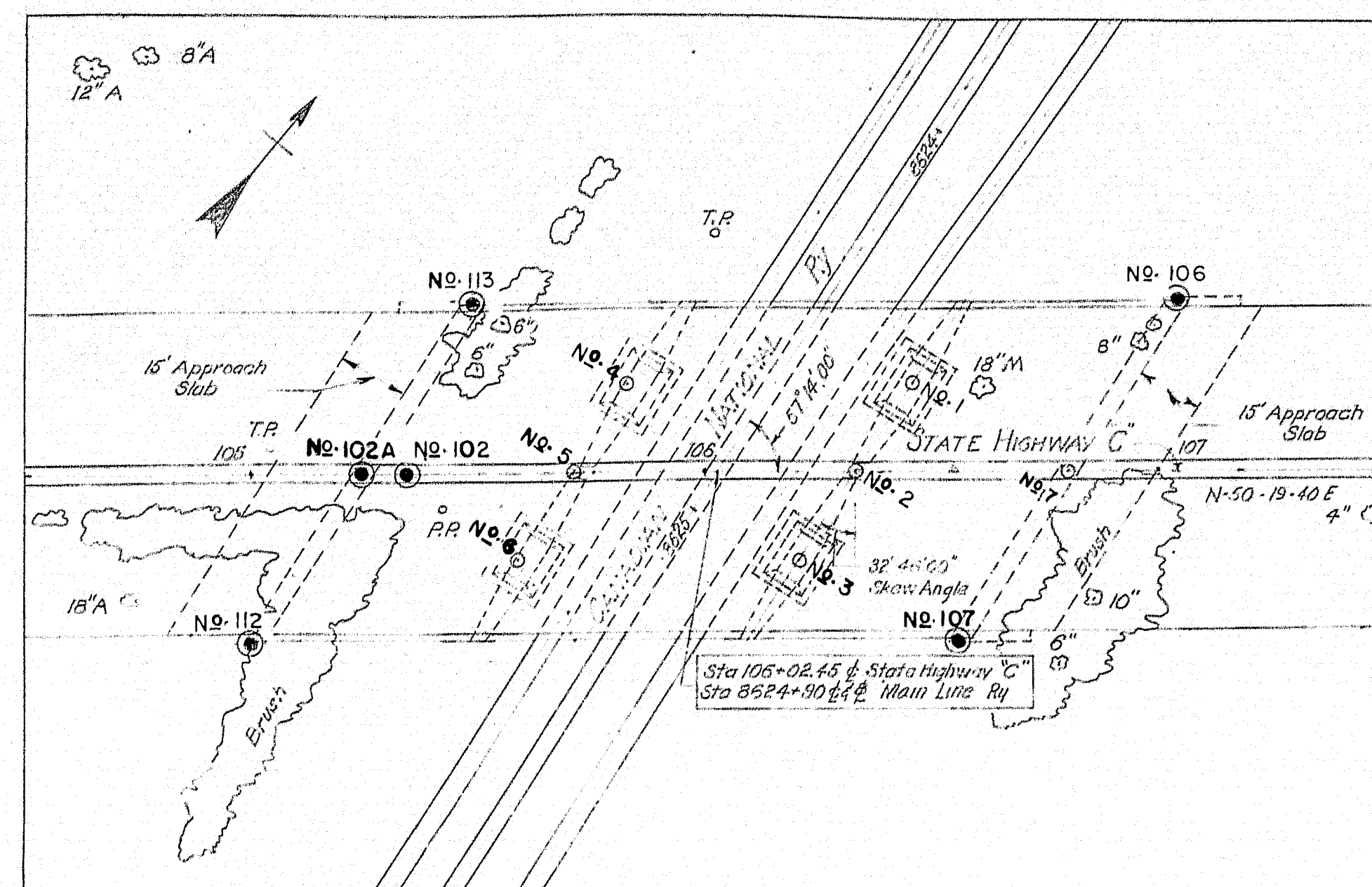
APPROVED DATE

DIVISION ENGINEER  
BUREAU OF PUBLIC ROADS ADMINISTRATION  
DEPT. OF COMMERCE

M. 506

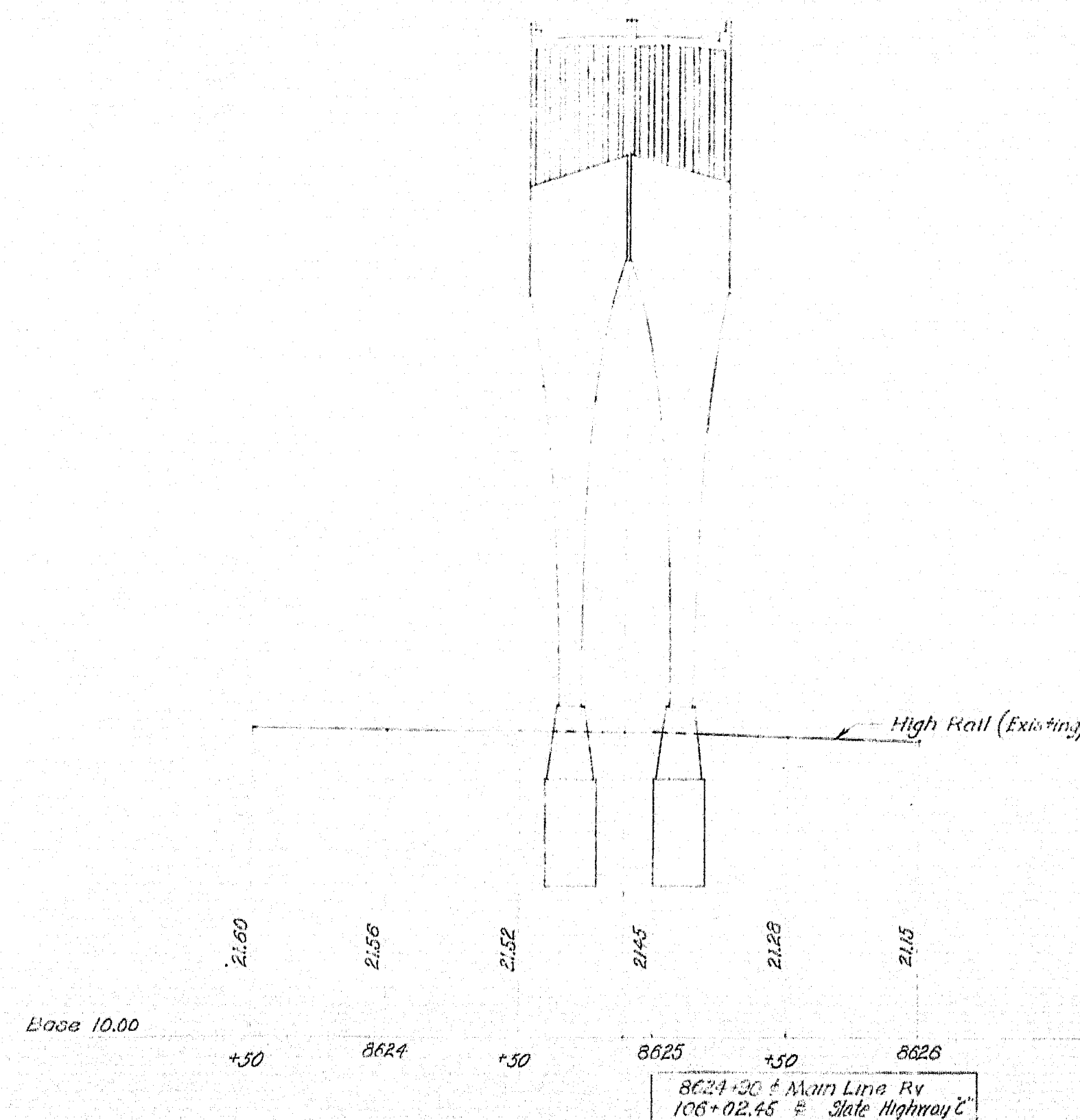






GENERAL PLAN

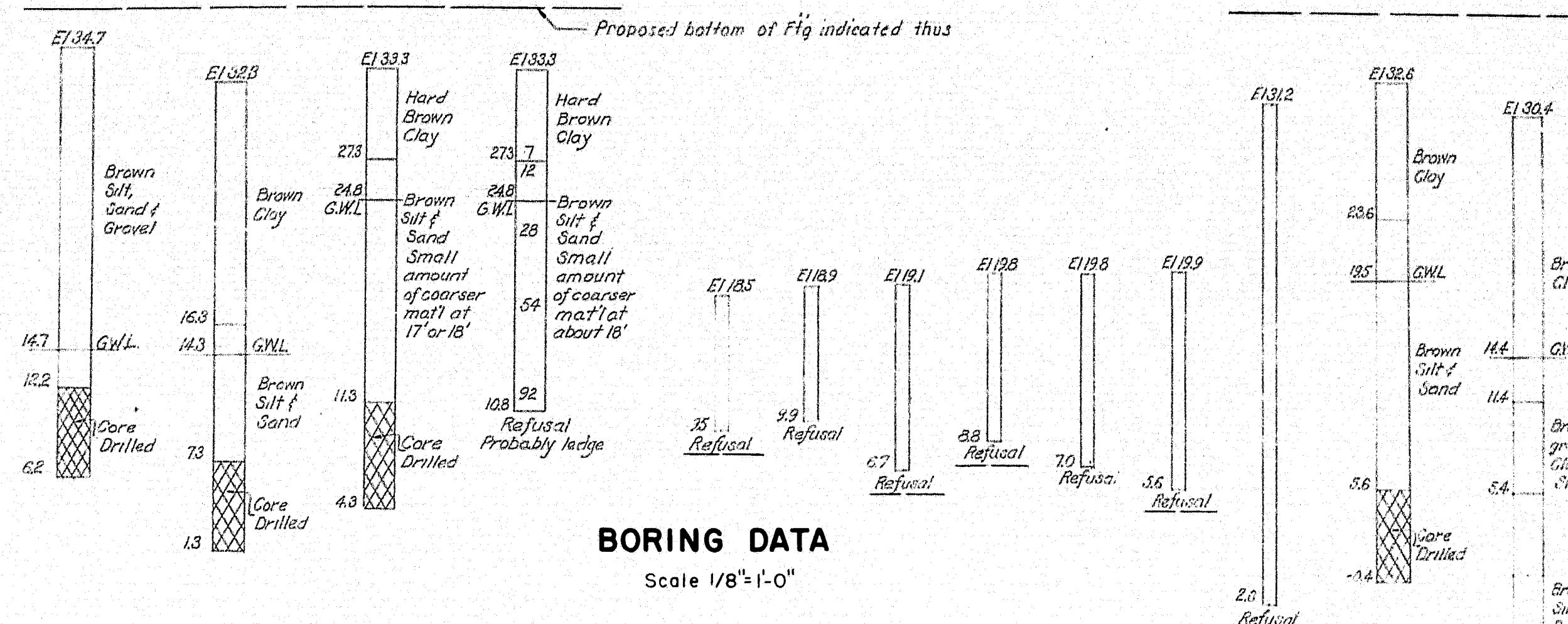
Scale 1"=30'-0"



PROFILE of CANADIAN NATIONAL RAILWAY (MAIN LINE)

SCALE Vertical 1"=5'-0"  
Horizontal 1"=50'-0"

Nº112 Nº113 Nº102A Nº102 Nº6 Nº5 Nº4 Nº3 Nº2 Nº1 Nº7 Nº107 Nº106

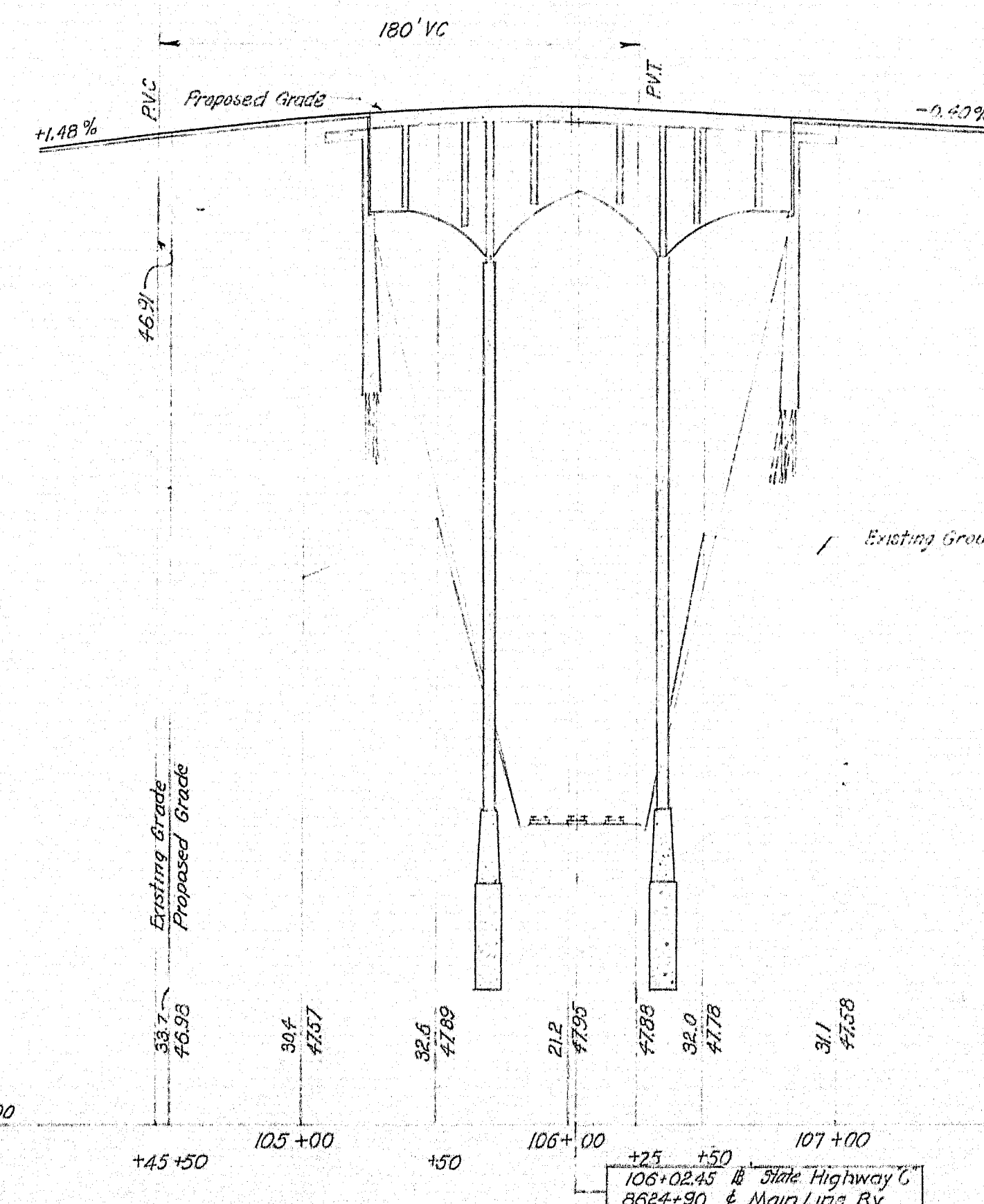


BORING DATA

Scale 1/8"=1'-0"

BORING NOTES

Location of Borings shown on Plan thus  $\odot$  Nº 112  
Location of Red Soundings shown on Plan thus  $\odot$  Nº 5  
Borings are taken for purposes of design and show conditions of bearing strata only, but do not necessarily show nature of material to be encountered during construction.  
Figures inside columns indicate number of blows required to drive a 2" O.D. pipe 1 foot using a 275# hammer falling 18 inches.  
GWL denotes Ground Water Level at the time the boring was taken.  
Samples from test boring and blow counts for red soundings are available and may be seen at the office of the Maine State Highway Commission, Division 6, at 46-2 Fore-st Ave., Portland Maine.



PROFILE of HIGHWAY "C"

SCALE Vertical 1"=5'-0"  
Horizontal 1"=50'-0"

P.R.A. DIV. NO.	STATE	FEDERAL PROJECT	AID NO.	SHEET NO.	TOTAL SHEETS
1	MAINE	UGI-01-1(4)	2	7	

## GENERAL NOTES

### FOUNDATIONS:

MAY BE ALTERED TO SUIT CONDITIONS OF CONSTRUCTION. TREATED TIMBER PILES UNDER ABUTMENTS ARE TO BE DRIVEN TO LEDGE, REGARDLESS OF LOAD CAPACITY, JETTED IF NECESSARY AND FITTED WITH APPROVED PILE POINTS.

### DESIGN:

ACCORDING TO SPECIFICATIONS OF THE AMERICAN ASSOCIATION OF STATE HIGHWAY OFFICIALS FOR H-20 S16-44 LOADING. (1949 ED).

### BENCHMARK:

TOP NUT HYD., SOUTH SIDE KENSINGTON OPPOSITE WINDSOR TERRACE ELEVATION 32.72 (MEAN TIDE BASE).

### REINFORCEMENT:

ALL REINFORCING STEEL BARS SHALL CONFORM TO A.S.T.M. SPECIFICATIONS A305-49

## ESTIMATED QUANTITIES

(NOT GUARANTEED)

ITEM NO.	ITEM	QUANTITY	UNIT
7	STRUCTURAL EARTH EXCAVATION, PIERS	750	C.Y.
8	STRUCTURAL ROCK EXCAVATION, PIERS	120	C.Y.
43A	BITUMINOUS CONCRETE SURFACE COURSE	130	TONS
51	BITUMINOUS DAMP-PROOFING	250	S.Y.
52	MEMBRANE WATER-PROOFING	1260	S.Y.
53	GRANITE FACED PRE-CAST CONCRETE EDGING (11"x7")	315	L.F.
54	GRANITE CURB (6"x11")	380	L.F.
56A	CLASS A, CEMENT CONCRETE MASONRY	785	C.Y.
56B	CLASS A-A, CEMENT CONCRETE MASONRY	730	C.Y.
56C	CLASS B, CEMENT CONCRETE MASONRY	200	C.Y.
57	CEMENT (4 BAGS / BARREL)	2615	BARRELS
58	STEEL REIN. FOR STRUCTURES, DEL. & PLACED	295,500	LBS.
75A	EXPANSION BEARINGS, TYPE A	28	EACH
75C	EXPANSION BEARINGS, TYPE C	14	EACH
76A	BRIDGE RAILING, TYPE A	375	L.F.
77B	FIXED BEARINGS, TYPE E	14	EACH
83	PILES, WOODEN, TREATED	3850	L.F.
86	STRUCTURAL STEEL, DELIVERED & PLACED	16,720	LBS.

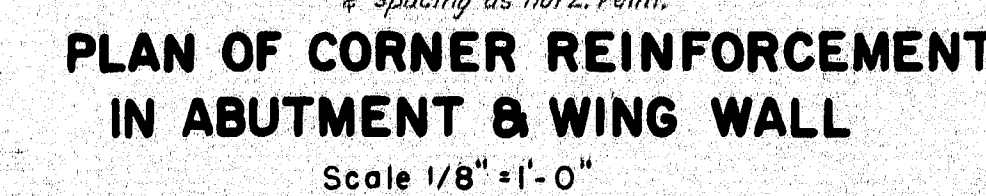
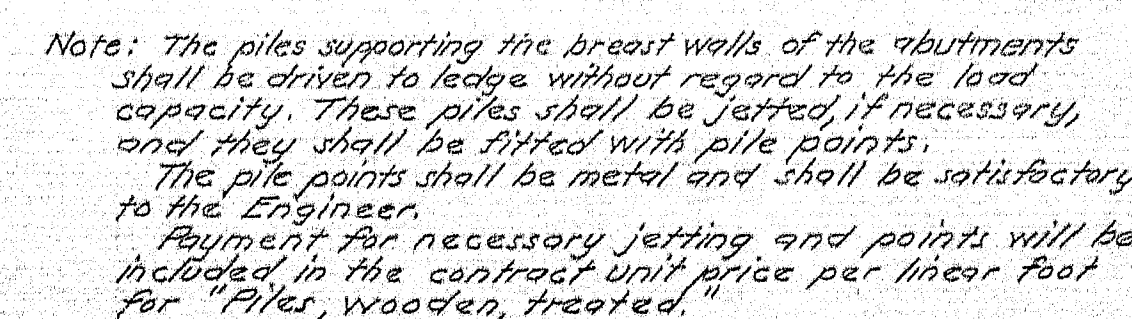
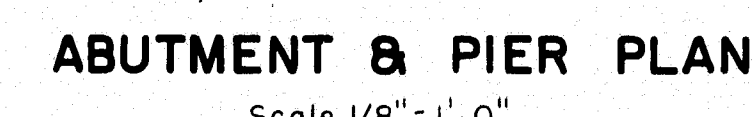
Notes:  
1. All stations taken on & indicated on Plans.  
2. Contractor shall submit a schedule of boring operations for approval by the Engineer.  
3. All exposed concrete corners to be chamfered as indicated on plans for as directed by Engineer.  
4. All steel reinforcement splices to be 35' unless otherwise noted.

DRAWN BY: Snow	BRIDGE NO.
TRACED BY: Snow	
CHECKED BY: Zacher	
STATE HIGHWAY COMMISSION	
AUGUSTA, MAINE	
BRIDGE DIVISION	
STATE HIGHWAY "C"	
CANADIAN NAT'L RAILWAY - BRIDGE NO. 6	
PORTLAND	
CUMBERLAND COUNTY	
GENERAL PLAN, BORING DATA, & PROFILES	
SCALE: AS NOTED	
SHEET 2 OF 7 SHEETS	
MAY 1952	
REVISED JAN. 1953	

M. 507

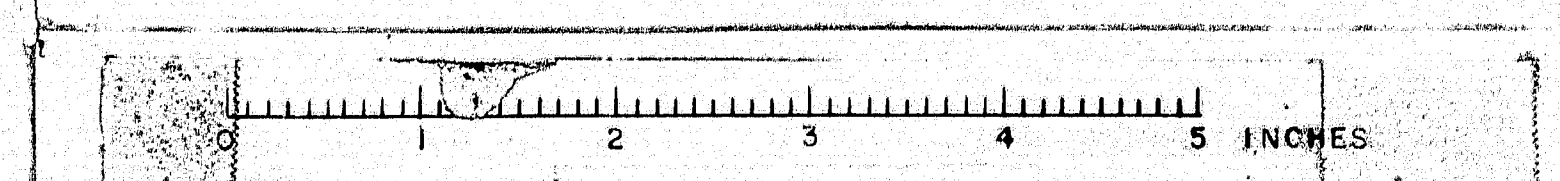


TYP. DET. AT HORIZ.  
CONST. JT.



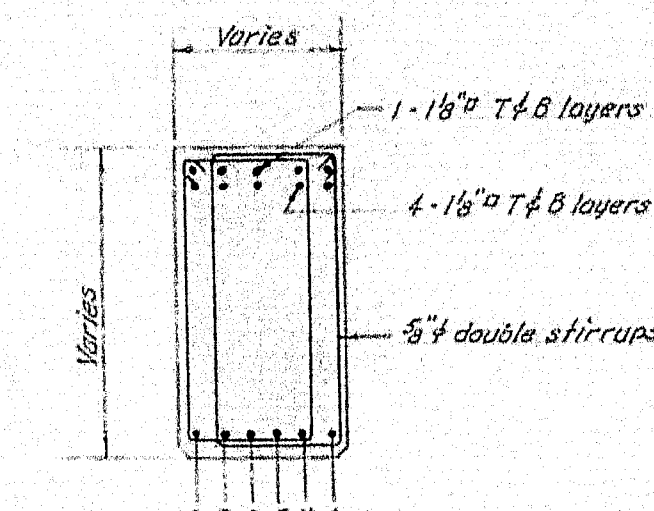
DRAWN BY: <i>Simon</i>	BRIDGE NO.
TRACED BY:	
CHECKED BY: <i>Lauer</i>	
. STATE HIGHWAY COMMISSION AUGUSTA, MAINE BRIDGE DIVISION <b>STATE HIGHWAY "C"</b> <b>CANADIAN NAT'L RAILWAY-BRIDGE NO.</b> PORTLAND CUMBERLAND COUNTY <b>ABUTMENT, PIER, &amp; PILE PLANS &amp; DETAILS</b>	
SCALE: AS NOTED	
SHEET 3 OF 7 SHEETS	MAY 1952 REVISED JAN. 1953

M. 508

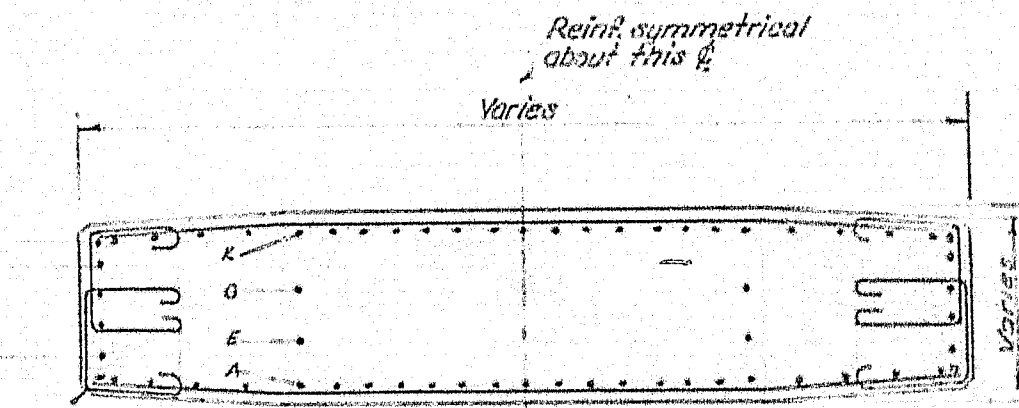




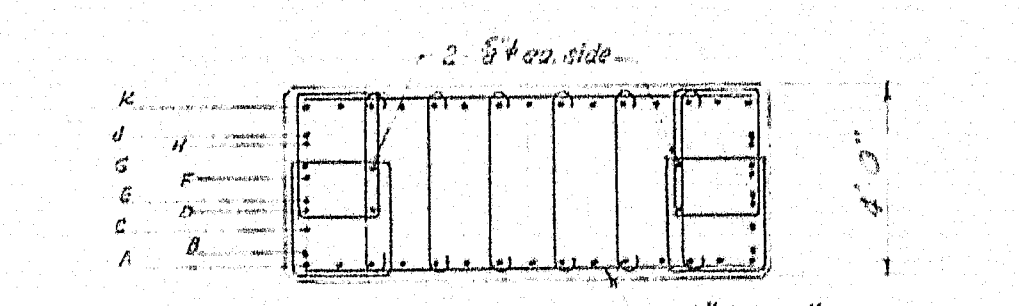
P.R.A. DIV. NO.	STATE	FEDERAL PROJECT	AID NO.	SHEET NO.	TOTAL SHEETS
1	MAINE	UGI-01-1(4)	4	7	



**SECTION E-E**  
Scale 1/4"=1'-0"



**SECTION D-D**  
Scale 1/4"=1'-0"

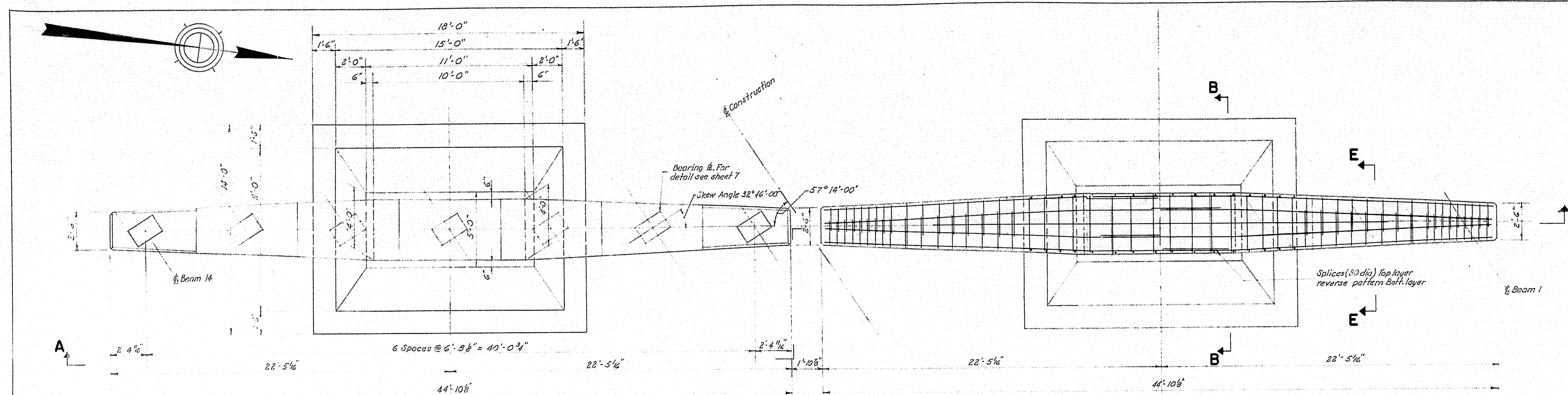


**SECTION C-C**  
Scale 1/4"=1'-0"

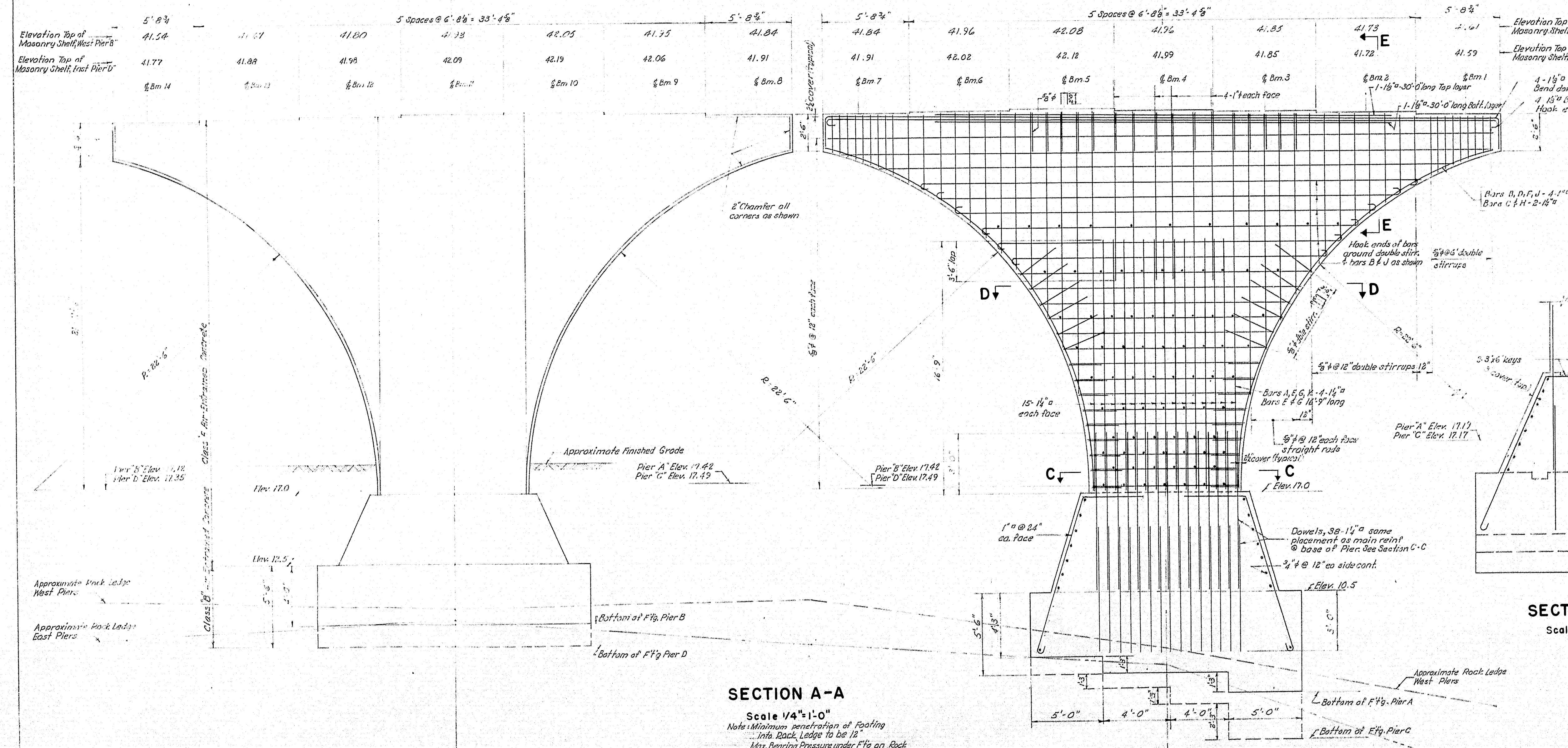
NOTE:  
CONTRACTOR SHALL SUBMIT TO THE RAILROAD FOR APPROVAL A PLAN SHOWING THE METHOD OF CONSTRUCTION OF THESE PIERS INCLUDING ALL SHEETING FOR FOOTINGS AND CLEARANCES WHICH WILL PREVAIL

DRAWN BY: <i>Dane</i>	CHECKED BY: <i>Lauer</i>	BRIDGE NO.
STATE HIGHWAY COMMISSION AUGUSTA, MAINE BRIDGE DIVISION STATE HIGHWAY "C" CANADIAN NAT'L RAILWAY-BRIDGE NO.6 PORTLAND CUMBERLAND COUNTY PIER DETAILS		
SCALE: AS NOTED		MAY 1952
SHEET 4 OF 7 SHEETS		REVISED JAN. 1953

M. 509

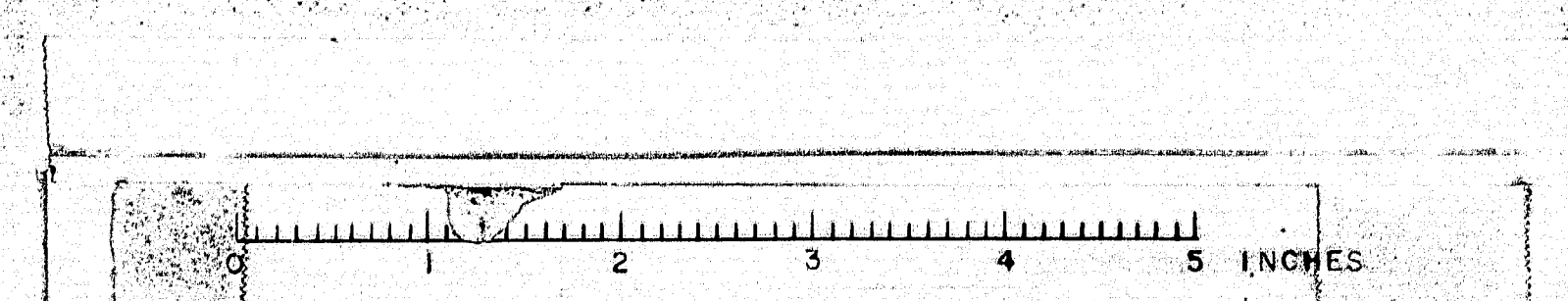


**PLAN OF PIERS**  
Scale 1/4"=1'-0"



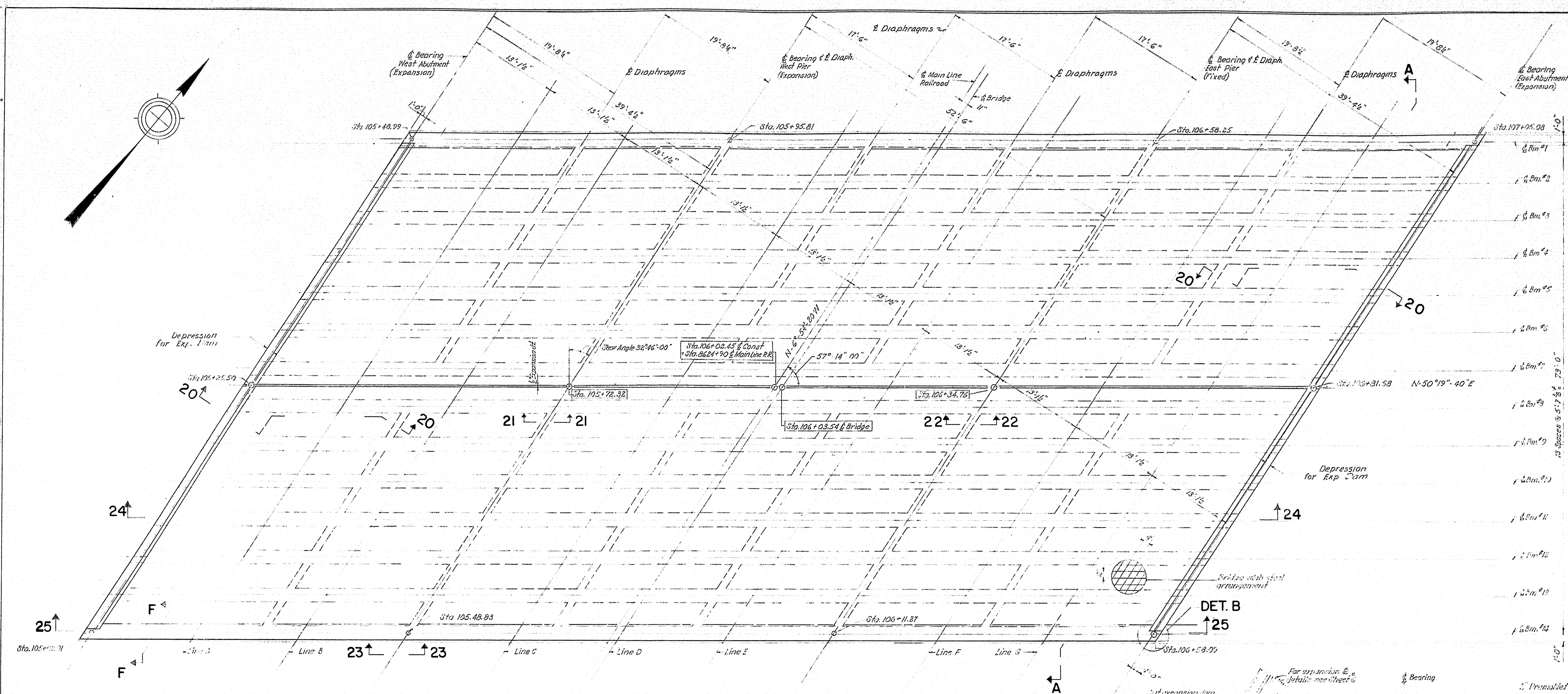
**SECTION A-A**  
Scale 1/4"=1'-0"

Note: Minimum penetration of footing into Rock Ledge to be 12 inches. Bearing Pressure under Ftg on Rock Ledge 10 tons per sq. ft. Concrete to be bush hammered to receive Bed 12" Spd detail sheet. Pier above elev. 17.0 is to be poured in place.





P.R.A. DIV. NO.	STATE	FEDERAL PROJECT	AID NO.	SHEET NO.	TOTAL SHEETS
1	MAINE	UGI-01-1(4)	5	7	



### FRAMING PLAN

Scale 1/8"=1'-0"  
 Note: For Elev. @ 1/2" of Spacing of beams, see Schedule Sheet 6.  
 For Sections 20-25 to 25-25 incl. see Sheet 6.  
 Contractor to submit pouring schedule for approval by the Engineer.

### DETAIL B

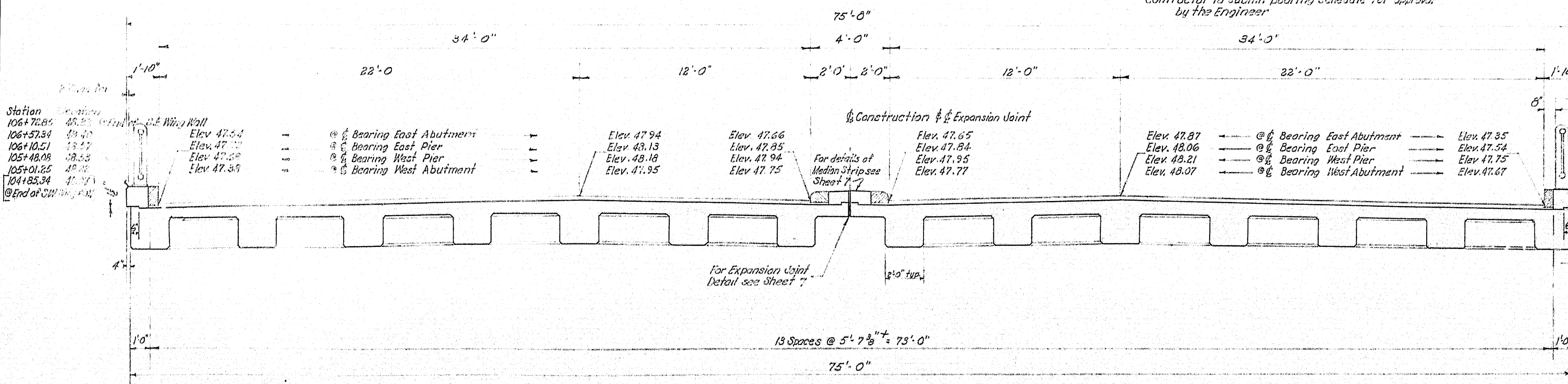
Scale 3/8"=1'-0"

### ELEVATION C-C

No Scale

### DETAIL D

Scale 1/2"=1'-0"



### SECTION A-A

Scale 1/4"=1'-0"

Note: All dimensions given are square

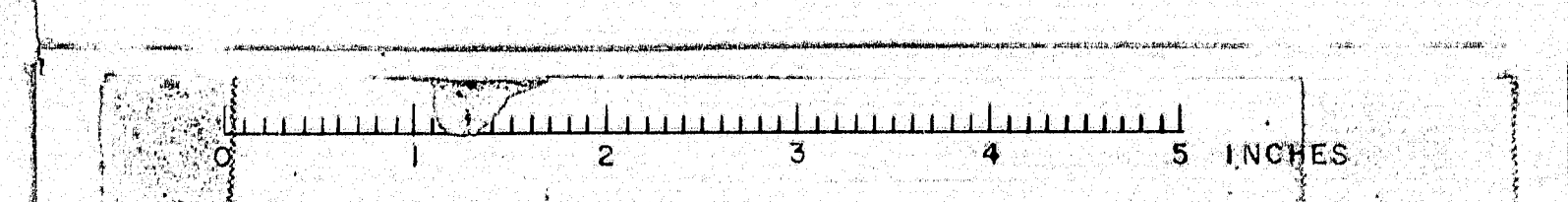
### SECTION F-F

Scale 1/2"=1'-0"

NOTE  
 CONTRACTOR SHALL SUBMIT TO THE RAILROAD FOR APPROVAL A PLAN SHOWING ALL FALSEWORK TO SUPPORT SPAN OVER THE RAILROAD DURING CONSTRUCTION INCLUDING CLEARANCES WHICH WILL PREVAIL.

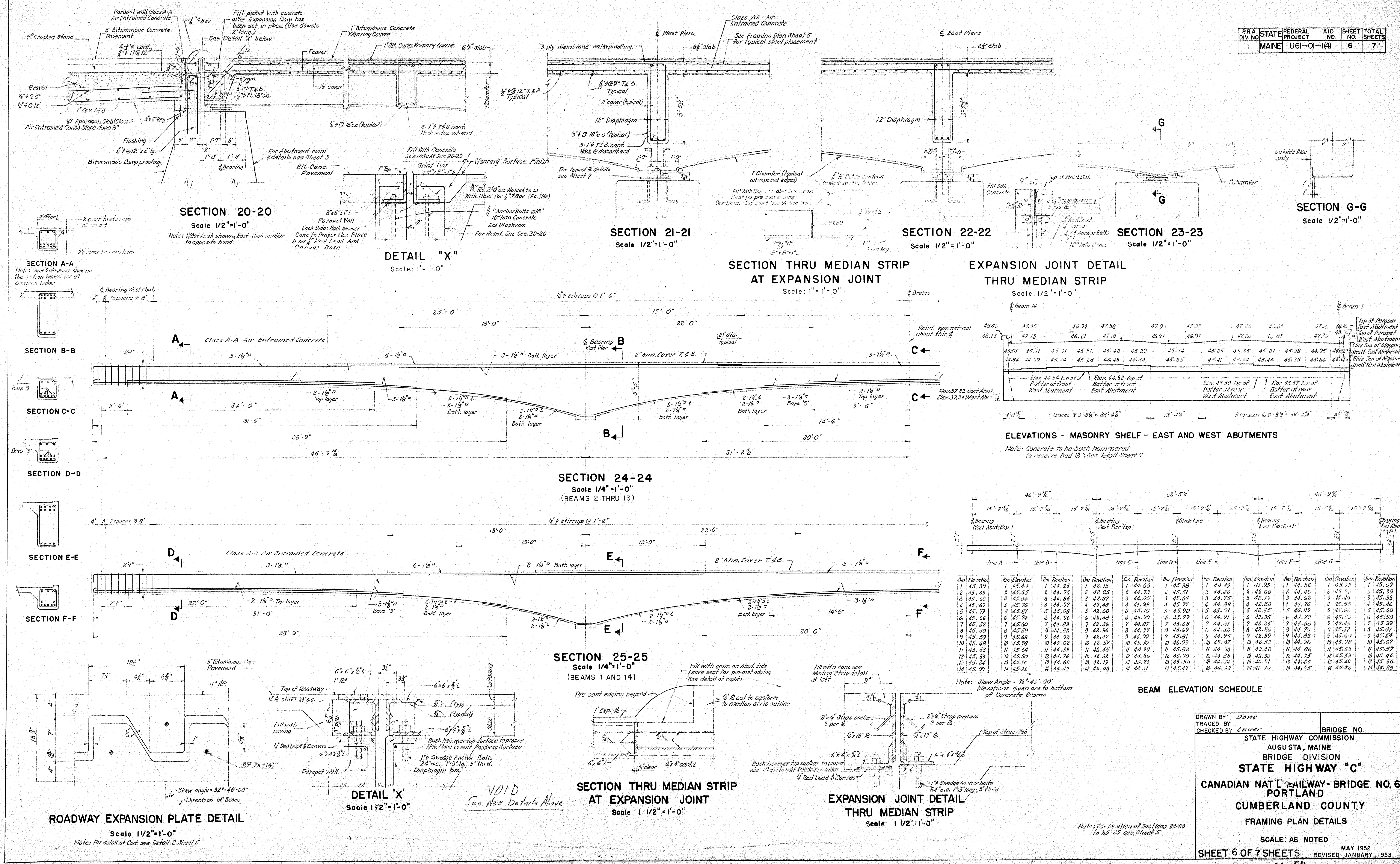
DRAWN BY: <i>Dave</i>		BRIDGE NO.
CHECKED BY: <i>LOU</i>		
STATE HIGHWAY COMMISSION AUGUSTA, MAINE BRIDGE DIVISION		
<b>STATE HIGHWAY "C"</b>		
<b>CANADIAN NAT'L RAILWAY-BRIDGE NO. 6</b>		
<b>PORTLAND</b>		
<b>CUMBERLAND COUNTY</b>		
FRAMING PLAN AND SECTION		
SCALE: AS NOTED		
SHEET 5 OF 7 SHEETS	MAY 1952	
	REVISED JANUARY 1953	

M. 510





F.R.A. DIV. NO.	STATE	FEDERAL PROJECT	AID NO.	SHEET NO.	TOTAL SHEETS
1	MAINE	UG1-01-14	6	7	7



DRAWN BY: *Dane*  
 TRACED BY: *Lauer*  
 CHECKED BY: *Lauer*

BRIDGE NO. \_\_\_\_\_  
 STATE HIGHWAY COMMISSION  
 AUGUSTA, MAINE  
 BRIDGE DIVISION  
**STATE HIGHWAY "C"**  
 CANADIAN NAT'L RAILWAY - BRIDGE NO. 6  
 PORTLAND  
 CUMBERLAND COUNTY  
 FRAMING PLAN DETAILS

SCALE: AS NOTED  
 SHEET 6 OF 7 SHEETS  
 MAY 1952  
 REVISED JANUARY 1953

M. 34



